

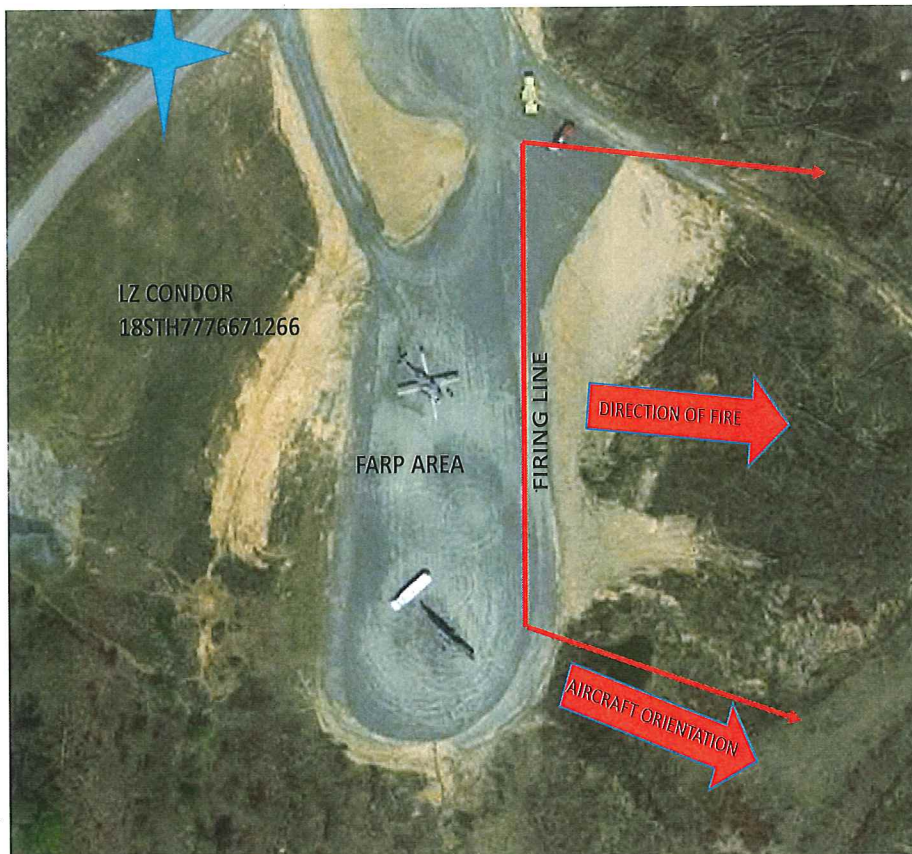
# RANGE SOP

## RANGE 9

**DESCRIPTION:** Multipurpose Machinegun/Indirect Fire Range  
**STATUS:** Active  
**LOCATION:** 18STH7776671266  
**No. Firing Pts.** Multiple

**RANGE USES:**  
**Primary Use:** Multipurpose Machinegun/Indirect Fire Range  
**Alternate Uses:** FARP

\*\*IA=Impact Area\*\*



### **WEAPONS ACCOMMODATED**

#### **GROUND :**

- Pistol
- Shotgun
- All Machine Guns (Up to .50 cal)
- M16A2/A4/M4
- Sniper Rifles
- Automatic Rifles
- AT-4
- SMAW
- M72 LAAW

- M3 MAAWS
- M203
- MK19 (TP Only)
- 25mm Chain Gun (TP Only)
- Hand Grenades (Illum/Prac)
- M107 SASR
- Class 3B and Class 4 LASERS
- USMC-approved foreign weapons
- 60mm Mortars
- 81mm Mortars
- Javelin Guided Missile (Deviation)
- TOW 2A Missile (INERT)

**AIR:**

- Small and med machine guns-R15 IA (Door)
- 20mm (Cobra and F/W)-R15 IA
- 30mm (A-10)-R15 IA
- 2.75" FFAR MK 66-R15 IA (INERT)
- 5" Rockets-R15 IA (INERT)

**AMMUNITION AUTHORIZED**

**GROUND:**

- Pistol (All)
- Shotgun (All)
- Hand grenades Illum/Practice
- 40mm handheld grenade launchers (all)
- 5.56mm (All)
- 7.62mm x 51mm/.308 Special Ball
- .300 Winchester Magnum
- .50 cal ball
- .50 cal MK211 A606
- .338 LaPua Magnum
- USMC-approved foreign weapons ammunition
- AT-4 (All)
- SMAW (All)
- 66mm LAAW HE
- 21mm LAAW Trainer
- M3 MAAWS (All)
- 25mm (TP Only)
- MK-19 (TP only)
- 60mm Mortars
- 81mm Mortars
- Javelin Guided Missile (Deviation)
- TOW 2A Missile (INERT)

**AIR:**

- Small and med machine guns-R15 IA (Door)
- 20mm (Cobra and F/W)-R15 IA
- 30mm (A-10)-R15 IA
- 2.75" FFAR MK 66-R15 IA (INERT)
- 5" Rockets (INERT)-R15 IA

**TARGETS/SIMULATORS/DEVICES**

<u>Target Description</u>	<u>Quantity</u>
Hard Targets EODT	Multiple
Non Automated Infantry Targets	Multiple
Metal Connex Container	One

**LASERS AUTHORIZED:** Class 3B and Class 4 Lasers are authorized in accordance with the current MCB Laser Range Safety Survey Report. These LASERS will not be fired above the designated LASER targets for this range.

**PRIMARY DIRECTION OF FIRE:** South East 139 degrees magnetic

**RANGE USE RESTRICTIONS/COMMENTS:**

1. Only weapons, ammunition and ordnance listed in this document will be used on this range.
2. OIC and RSO must be present while live fire is in progress.
3. Range 9 layout:

Main firing line	18STH7776671266	Direct Fire/81/60mm mortar
Mortar Position 9A	18STH7795071534	81/60mm mortar into R15
Mortar Position 9B	18STH7800071245	81/60mm mortar all targets
Mortar Position 9C	18STH7783871186	81/60mm mortar all targets
Mortar Position 9D	18STH7773270732	81/60mm mortar into R15

4. This range contains a high-hazard/dudged impact area. Downrange movement without EOD is not authorized.
5. Non-participating personnel are not allowed in the Range 15/Range 15A/LZ Turkey area under any circumstances when firing from Range 9.
6. Ensure range flags are posted, ear protection is worn (eye protection for steel), safety brief is given, Range Control contacted and all fires are directed between the left and right lateral limits markers (black and white striped).
7. All brass, trash, targetry and materials will be removed completely at the end of training by the using unit.



8. All training, including Close Air Support training will be in accordance with the Range Regulations and Range SOP requirements.
9. HERO sensitive munitions are commonly used on this range. It is the OIC/RSO responsibility to understand all capabilities and limitations of their munitions. Ensure all necessary HERO precautions are taken.
10. FARP operations and live-fire training cannot be conducted on Range 9 main firing line, MP-9B or MP-9C simultaneously. FARP operations and simultaneous mortar fire from MP-9A or MP-9D must be deconflicted by time.
11. EOD must do a surface sweep of MCB-Dirt 6 after firing mortars from Range 9 into the Range 15 target box before vehicle traffic is allowed(Range Control, Contractors, etc).
12. Maneuver on Range 15A is not authorized when firing 81mm mortars from MP-9's into Range 15 unless coordinated or deviation is activated.
13. Units that do not occupy their range within two hours of their scheduled occupy time will lose the priority of use of that range for that day.
14. Class 3B and Class 4 LASERs will not be fired at any targets other than the designated ones in this certification and the Range SOP.
15. Javelin firing data:
  - FP: 18STH7781271305
  - TP: 18STH7843570573 EODT
  - MTL Azimuth: 139 degrees mag
16. TOW firing data:
  - FP: 18STH7778971247
  - TP: 18STH7849970803 EODT
  - MTL Azimuth: 121 degrees mag
17. Artillery can be observed in the Range 15 target area from Range 9 when it is fired from GP45.
18. When firing .50 cal MK211 A606 ammunition from the Special Application Scoped Rifle (SASR), the following safety parameters will be met:
  - a. Loading and firing of the weapon system will be done in the prone position.
  - b. All weapon systems are zeroed or BZO'd prior to arriving at the range and are outfitted with variable power telescopic sights.

c. All shooters have previously qualified with the primary sniper rifle and/or the SASR or have had hands-on familiarization training with the SASR.

d. All training is closely supervised by specially-trained position safety officers (PSO's).

e. Targets are restricted to Range 9 and Range 15 targets.

f. All SASR firing procedures outlined in the associated Training Manual (TM) will be strictly adhered to.

\*\*The .50 cal MK211 A606 and 25mm TP SDZ's will reflect Distance Y as maximum range referencing SOUM 3-18 Guidance For Using Distance Y When developing Surface danger Zones.

19. Firing the SASR from the road (Range 9 Road) is permitted provided the road is secured by barriers and/or road guards and no one is forward of the muzzles on Range 9.

20. All mortar systems will be pre-registered on targets prior to conducting firing where maneuvering troops are involved (Range 15A).

21. When firing 25mm chain gun from LAV-25 vehicles, only training purpose (TP) ammunition will be used. Vehicles can move on the range while firing if under 5 mph.

22. All aerial firing (fixed, rotor wing and door gunnery) will be conducted in line with Range 9 firing line and the Range 15 target area (Range 9-Range 15 corridor).

**FACILITIES (Number of each):**

Towers: 0      Sheds: 0      Ammo Breakdown: 1      Parking: Limited

**UTILITIES AVAILABLE:**

Electricity:                      None  
Lights:                              None  
Water System:                      None

**INSTALLED COMMUNICATIONS:** None

<u>MEASURED DISTANCES:</u>	<u>MILES</u>	<u>MGRS</u>
TBS	8.0	87106390
ASP	10.0	91256605
EMT/Fire (Fire House 3):	10.4	89606410
Range Control	8.5	87406360
WTBN	8.5	87806740
Mainside Gate	12.0	94406440
Camp Upshur	5.0	80007850
Nearest MEDEVAC LZ	0.0	77767126 (Range 9/LZ CONDOR)

LASERS AUTH: Up to Class 4. See LASER Certification.

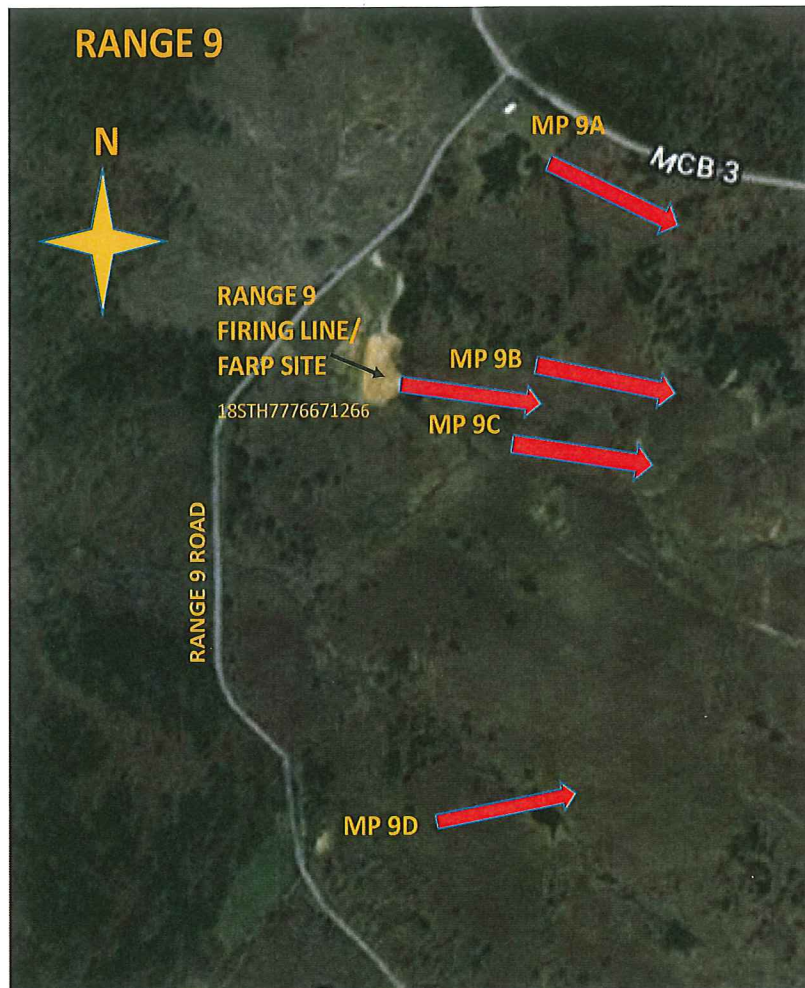
AVAILABLE DAYS/HOURS: 362/All

AREA SUITABILITY:

<u>Unit Type</u>	<u>Unit Size</u>	<u>No. of Units</u>
Mortars	Section	2
Infantry	Platoon	1

GEOGRAPHICAL DATA:

Access Routes	MCB-3 and Range 9 Road.
Soil Type	Dirt
Terrain Type	Rolling hills
Vegetation	Grass/Woodland



**COMMUNICATION REQUIREMENTS:**

1. A radio check is required immediately upon occupying any portion of the RTA, every 30 minutes in a live fire status and every 3 hours in a non-live fire status.
2. The Range Control Facility (RCF) Fire Desk Net Control call sign is "Range Control". Your call sign is "Range XX" (name of range, training area or facility unit is occupying).
3. The primary RCF Fire Desk Net Control frequencies are: ELMR talk group "RC Safety" (ground) and 323.7 AM UHF (air).
4. The secondary RCF Fire Desk Net Control is telephone, numbers: 703-784-5321 or 5322.
5. OIC/RSO will monitor the RCF primary and secondary Safety Nets at all times. Instant communication is required.



6. Any unit with organic ELMR radios will have their ELMR radios programed with the "RC Safety" talk group and use those radios as their primary means of communication within the RTA.

7. Units without organic ELMR assets will be issued ELMR radios from RMB upon check-in.

8. Approved Non-ELMR radios are only authorized for internal communication (ground).

9. If the RCF cannot reach a unit within the RTA via primary communication, the unit will be contacted via the secondary means of communication.

10. Upon loss of primary communication the OIC/RSO will initiate a "check fire"/cease training status and will contact the RCF via secondary communication. This communication will be maintained while primary communication is being restored. Units may only resume firing/training once primary communication has been re-established and clearance is granted by the RCF.

#### **INJURY CLASSIFICATIONS:**

Injuries are classified into the following categories in order to aid in casualty evacuation from the RTA.

1. ROUTINE. Routine injuries are those injuries that are not threatening to life, limb or eyesight; and conditions or illnesses treatable by medication or procedures available at the base medical facilities.

2. PRIORITY. Priority injuries are those injuries that require immediate medical attention but are not threatening to life, limb, or eyesight if treated promptly.

3. URGENT. Urgent injuries are severe injuries that are threatening to life, limb, or eyesight and require immediate medical attention.

4. MASS CASUALTY. A mass casualty is a series of injuries with multiple priority and urgent medical patients.

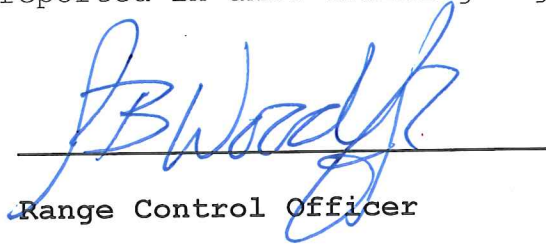
#### **MEDICAL EVACUATION (MEDEVAC) PROCEDURES:**

1. Injury occurs.
2. Range immediately cease-fires.
3. Medical support evaluates/treats injured personnel.
4. Range OIC/RSO notifies the RCF of the injury, is the victim conscious/unconscious and what type of MEDEVAC transportation is requested (ground/air).



5. The OIC/RSO must maintain constant radio contact with Range Control and awaits further instructions.

\*Minor injuries and illnesses not requiring medical services need not be reported to the RCF but should be reported in unit training logs.

  
Range Control Officer

Date: 13 June 2019